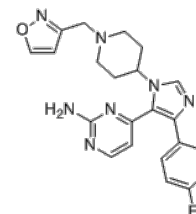


**Product Name** : PF-5006739  
**Cat. No.** : PC-61114  
**CAS No.** : 1293395-67-1  
**Molecular Formula** : C<sub>22</sub>H<sub>22</sub>N<sub>7</sub>O  
**Molecular Weight** : 419.464  
**Target** : Casein Kinase  
**Solubility** : 10 mM in DMSO



## Biological Activity

PF-5006739 is a potent, selective casein kinase **CK1δ/ε** inhibitor with IC<sub>50</sub> of 3.9/17.0 nM, respectively.

PF-5006739 demonstrates excellent kinome selectivity in a 59-kinase panel with exception of JNK2 (IC<sub>50</sub>=6.1 μM) and ZC3 (IC<sub>50</sub>=1.5 μM).

PF-5006739 exhibits robust centrally mediated circadian rhythm phase-delaying effects in both nocturnal and diurnal animal models, attenuates opioid drug-seeking behavior in a rodent operant reinstatement model in animals trained to self-administer fentanyl.

PF-5006739 also improves glucose tolerance in both DIO and genetic (ob/ob) models of obesity.

## References

Wager TT, et al. *ACS Chem Neurosci*. 2014 Dec 17;5(12):1253-65.

Cunningham PS, et al. *Sci Rep*. 2016 Jul 21;6:29983.

**Caution: Product has not been fully validated for medical applications. Lab Use Only!**

E-mail: tech@probechem.com